



Engagement Opportunities and Conference Sponsorship



Email sponsors@cste.org to get started!



who is CSTE?



94.6% of members
work in state, Tribal, local or
territorial health departments

The Council of State and Territorial Epidemiologists (CSTE) is the professional home for applied epidemiologists representing multiple levels of public health practice.

Members have surveillance and epidemiology expertise in a broad range of areas including occupational health, infectious diseases, environmental health, chronic diseases, injury, maternal and child health, tribal epidemiology, and more. CSTE also supports effective public health surveillance and sound epidemiologic practice through training, capacity development, and peer consultation. We help deliver high quality data through modernization efforts and advance health for all by improving overall public health policy—all in service of our vision of thriving and healthy people and communities everywhere.

Home to over

3,600 members

doing work across over **45** subcommittees
& working groups



CSTE messaging reaches over

14,500

**followers & subscribers across
all our social media platforms**



organizational Champions

CSTE's Organizational Champion Program was launched in 2024 to offer companies a year-round suite of benefits that help them better connect with CSTE and its members. Champions, in turn, support the mission of CSTE: advance the field of applied epidemiology to maximize health. A win-win! And in response to your feedback, we've made some exciting changes to the program for Year 2. We know our Annual Conference is a hallmark for many partners, a best-in-class offering in this amazing corner of public health. We believe these two programs—one established, one new—work best in tandem. [See Page 6](#) for upgrade paths that make for an amazing, comprehensive experience for your business!

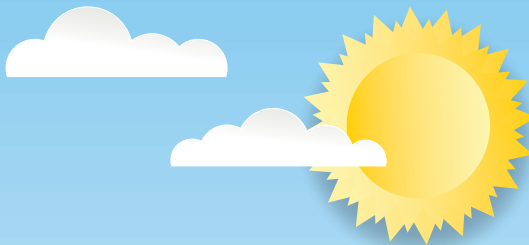


We're so grateful to the **six partners** who signed up during our inaugural year! *Will you be next?*

Organizational Champion benefits include:

- ➔ Host an **educational webinar** for CSTE members, showcasing your own footprint in public health outside of the Annual Conference season!
- ➔ Direct access to our members via **Associate Membership(s)**, allowing you to participate in committees across CSTE.
- ➔ Access to the **CSTE Annual Conference at the Exhibitor level**, meaning you won't have to choose between both these amazing programs.
- ➔ **CSTE Career Center Listing(s)**, giving your open positions broad exposure to qualified candidates within the CSTE community.
- ➔ Sponsored post(s) in CSTE's **member newsletter**, a twice-monthly periodical that boasts a 55% open rate and a 7.4% click rate.

2025 Annual Conference Sponsorship



The CSTE Annual Conference is the largest gathering of its kind, bringing together thousands of public health practitioners from across the country. Attendees meet to share knowledge, trends, challenges, and best practices in the field of applied epidemiology, and then carry that information back to their jurisdictions. Our epis hold key roles in public health across and in a broad range of areas.

By supporting the CSTE Annual Conference, your organization will heighten its brand recognition and profile with thousands of attendees. You'll also get to network with relevant public health professionals and educate them about your products and services. See the table on the **next page** for our 2025 suite of benefits. This is one of the most unique and energizing events of the year—don't miss out!

Deadline to Commit for Conference Sponsorship: **February 28, 2025**



CSTE

2025 ANNUAL
CONFERENCE

JUNE 8–12

csteconference.org

in



#CSTE2025



Grand Rapids
MICHIGAN



2025 Conference Sponsorship Benefits

Primary Benefits	EXHIBITOR \$3,000	SILVER \$7,000	GOLD \$12,000	PLATINUM \$30,000
Complimentary Registrations	1	2	3	4
Discounted Registrations	1	2	3	4
10x10 Booth in Networking Hall	Yes	Yes	Yes	Yes
Opt-in Attendee List	No	Yes	Yes	Yes
Website Visibility	Name Only	Logo+Link	Logo+Link	Logo+Link
Premium Attendee Engagement	No	1 Discussion Session	1 Discussion Session + 1 EpiVision Stage Presentation	1 Discussion Session + 2 EpiVision Stage Presentations + EpiVision Stage Branding



New for 2025!

Networking Hall lead retrieval will be available for purchase.
More information coming Spring 2025.

Add-Ons	Qty Available	Available for Purchase at Following Tiers			
		EXHIBITORS	SILVER	GOLD	PLATINUM
Logo on hotel key card	1	x	x	\$6,000	\$6,000
Opt-in attendee list	Unlimited	\$1,500	x	x	x
Logo on back of name badge	1	x	x	\$9,000	\$9,000
Title sponsor for AM/PM break	5	\$4,500	\$4,500	\$4,500	\$4,500
App push notifications	6	x	\$750	\$750	\$750
App downloadable document	Unlimited	\$500	\$500	\$500	\$500
Logo cling on Networking Hall floor	Unlimited	\$1,000	\$1,000	\$1,000	\$1,000
Pocket agenda advertisement	6	\$2,000	\$2,000	\$2,000	\$2,000

Benefits marked with an X are not available at that package tier.

Summary of Benefits Across All Programs

<div></div>			<div> Conference Sponsor</div>		Price										Conference Add-Ons**																											
							Standard Conference Booth Space		Complimentary Conference Registration		Discounted Conference Registration		45-Minute Conference Discussion Session		Conference EpiVision Presentation in Networking Hall		CSTE Associate Membership		CSTE-Facilitated Sponsored Webinar		CSTE Career Center Listing		CSTE Newsletter Feature Post		Sponsored Networking Event*		Title Sponsor for AM/PM Break		App Downloadable Document		Logo Cling on Networking Hall Floor		Pocket Agenda Advertisement		Opt-In Attendee List		Logo On Hotel Key Card		Logo On Name Badge		App Push Notification	
				Exhibitor	\$3,000	1	1	1	X	X	X	X	X	X	X	X	X	X	X	X	X	X	X	X	X	X	X	X	X	X	X	X	X	X	X	X	X	X	X	X	X	X
				Silver Sponsor	\$7,000	1	2	2	1	X	X	X	X	X	X	X	X	X	X	X	X	X	X	X	X	X	X	X	X	X	X	X	X	X	X	X	X	X	X	X	X	
				Gold Sponsor	\$12,000	1	3	3	1	1	X	X	X	X	X	X	X	X	X	X	X	X	X	X	X	X	X	X	X	X	X	X	X	X	X	X	X	X	X	X	X	
				Platinum Sponsor	\$30,000	1	4	4	1	2 + Stage Branding	X	X	X	X	X	X	X	X	X	X	X	X	X	X	X	X	X	X	X	X	X	X	X	X	X	X	X	X	X	X	X	
				Champion	\$15,000	1	1	1	X	X	1	1	1	1	X																											
				Champion + Upgrade to Silver Sponsor	\$20,000	1	2	2	1	X	2	1	2	2	X																											
				Champion + Upgrade to Gold Sponsor	\$25,000	1	3	3	1	1	3	1	3	3	X																											
				Champion + Upgrade to Platinum Sponsor	\$50,000	1	4	4	1	2 + Stage Branding	4	1	4	4	1																											

Benefits marked with an X are not available at that package tier.
*Year-round opportunities available. Email sponsors@cste.org for more information.
**Prices are per unit in most cases (e.g. logo clings are \$1,000 apiece.)

Member/Attendee Reach



Extend your reach! Conference Sponsors that are also Organizational Champions get the best of both worlds. You'll cover an even larger segment of public health, and your message will have resonance throughout the year—not just in June! See **Page 3 for more information on year-round benefits.**